



Cascade Windows puts life in the best light. We have built our reputation on superior performance, style and value. Just like our windows, Cascade's sliding glass doors offer two smart, innovative designs to homeowners and builders. In addition all Kit Homes feature our Ec and Ec+ Low-E glass.

#### ENERGY STAR

In the average home, at least 40 percent of energy costs annually are spent on heating and cooling. Proper selection of windows and doors can significantly affect how much money it takes to keep our homes bright and comfortable. Look for the Energy Star label on all Cascade windows and doors.

#### LOW-E GLASS

Our own specially coated Ec (Energy Comfort) and Ec+ (Energy Comfort +) windows reflect outside heat in the summer and interior heat in the winter, reducing your air conditioning and heating requirements.

#### UV PROTECTION

Ultraviolet (UV) rays are the culprits responsible for much of the fading in your home. You need some sun block. Protect your carpets, furniture and fabrics almost 90% better than ordinary glass by adding Ec or Ec+ glass.

#### FIX A GLARING PROBLEM

Your days of squinting indoors are over. Reduce the bright glare of sunlight, without reducing the amount of light that bathes your home. The Low-E coating on you Ec/Ec+ glass simply difuses light that passes through it.

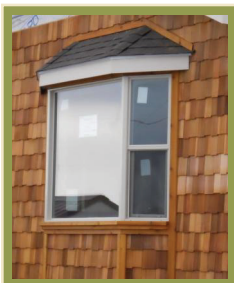
#### WARM EDGE SPACER

Edgetech SuperSpacer™ reduces condensation, reduces heat loss/gain through the glass, and greatly increases the integrity of the insulated glass unit's seal. Look for Super Spacer on all Cascade patio doors.

*Super Spacer®*

#### WINPRO WIDE FRAME

Cascade offers a 3 1/4" frame depth with fusion-welded corners. This gives you beautiful, distinctive shadow lines and improved window stability. When the application requires, Cascade offers a 2 3/4" frame.



### WINPRO SERIES

HIGH STYLE, HIGH VALUE

The WinPro Series is designed to give homeowners and building professionals a remarkable combination of sleek looks, reliable performance and serious value.

Intelligent design and energy efficiency results in a smart and affordable window with a maximized viewing area. The WinPro Series offers great flexibility in design and options while maintaining excellent structural and thermal qualities.

#### DISTINCTIVE LOOKS

The WinPro Series offers a clean, contemporary window design with a variety of grid options and configurations.

#### CLEAN, SOLID LINES

WinPro windows have no unsightly accessory grooves, offering clean lines and maximum viewing area.

#### SET BACK GLASS INSULATED

The glass units in our WinPro Series windows are set back from the exterior of the frame, presenting a balanced, framed appearance and increasing the stability of larger units.

#### COLOR MATCHED HARDWARE

All operable WinPro windows feature color-matched hardware to maintain a unified appearance. The Sliding Glass Door includes a contemporary-designed, rounded Euro-handle.

#### PERFORMANCE

| #STRUC TUAL VALUES           | Structural Rating | Test     |          | Operation |     |
|------------------------------|-------------------|----------|----------|-----------|-----|
|                              |                   | 120 x 60 | 120 x 72 | XOX       | XOX |
| 9100/9130 Horizontal Sliders | HS-C30<br>HS-R20  | 120 x 60 | 120 x 72 | XOX       | XOX |
| 9200 Single Hungs            | H-LC30            | 48 x 96  |          | X         |     |
| 9011 Picture Unit            | F-C35             | 96 x 60  |          | O         |     |

U-VALUES represent the rate of heat transfer through an object.

| #U VAL UES        | Testing Data | Ec   | Ec + argon | Clear | Ec+  | Ec+ + argon |
|-------------------|--------------|------|------------|-------|------|-------------|
| 9100              | U-Value      | .34* | .31*       | .49   | .34* | .30*        |
|                   | SHGC**       | .32  | .32        | .64   | .23  | .23         |
| 9200 Single Hungs | U-Value      | .34* | .31*       | .48   | .34* | .30*        |
|                   | SHGC**       | .32  | .32        | .64   | .23  | .23         |
| 9011 Picture Unit | U-Value      | .32* | .28*       | .47   | .31* | .27*        |
|                   | SHGC**       | .35  | .35        | .70   | .25  | .25         |

\*Energy Star Rated \*\* (With no internal muntins)

† These Values are subject to change without notice, based on testing and certification cycles

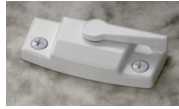
‡ Super Spacer standard on 9700XL Patio Doors



FRAMING LIFE'S MOMENTS. SM



CAM LOCK



HANDLE & LOCK OPTIONS



Patio Door Handle

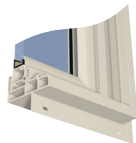


Secondary Lock (Patio Door)

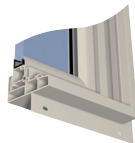
COLORS



White Frame



Almond Frame



Clay Frame

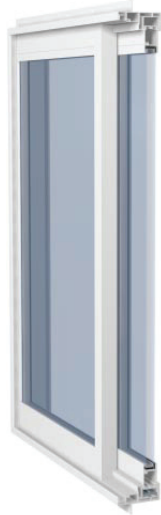


WIDE-RAIL SLIDING GLASS DOOR C9700XL

CONSTRUCTION

The making of a Cascade patio door requires extreme attention to details. Look what's inside.

- Rigid multi-chambered PVC extrusions providing structural integrity and high-sound and thermal insulation qualities.
- Precision mitered and heat-fusion welded corners.
- Integral vinyl pre-punched nailing flange for fast and efficient installation. Flush fin available upon request.
- High performance dual weather stripping minimizing air infiltration, reducing energy costs.
- Metal reinforced interlock, providing superior strength and rigidity.
- Flared interlocking profiles result in consistent and reliable operation and provides a tight seal.
- Heavy-duty lock and interior handle are standard on all units.
- Fully adjustable metal rollers provide smooth operation and reliable performance year after year.
- High performance glazing options include Low-E coatings, tints, solar-cool reflective glass, and argon gas.



Add that "French Door" feel to your home while enjoying the luxury of your renowned smooth sliding system. The C9700XL Wide-Rail Sliding Glass Door goes to extra lengths to satisfy.

Available in six and eight foot widths.

The C9730XL (3-lite wide rail door)

The C9700XL comes standard with heavy-duty extruded screen and secondary lock. Also available with keyed lock.

PERFORMANCE

| +STRUCTURAL VALUE  | Structural Rating | Test       | Operation |
|--------------------|-------------------|------------|-----------|
| C9700XL            | LC25              | 96" x 96"  | XO        |
| Sliding Glass Door | R20               | 144" x 96" | XO        |

| +U-VALUES          | Testing Data | Ec  | Ec w/ argon | Ec+ | Ec+ w/ argon |
|--------------------|--------------|-----|-------------|-----|--------------|
| C9700XL            | U-Value      | .36 | .33         | .36 | .33          |
| Sliding Glass Door | SHGC         | .27 | .26         | .19 | .19          |

U-VALUES represent the rate of heat transfer through an object.

+These values are subject to change without notice, based on testing and certification cycles.

\*Energy Star rated for various national zones. Please visit [energystar.gov](http://energystar.gov) to view specific zone requirements. \*\*(With no internal muntins)

All values are subject to change without notice, based on testing and certification cycles.



800.442.8544 • [cascadewindows.com](http://cascadewindows.com)



FRAMING LIFE'S MOMENTS.™

